

# ASHRAE Rochester



VOLUME 7, ISSUE 5

JANUARY 1, 2012

## INSIDE THIS ISSUE:

Officer /  
Committee  
List 2

Events 3  
Calendar

President's  
Message 4

Meeting Info 5  
**(JAN 5, 2012  
DEADLINE)**

ASHRAE 6  
Winter  
Conference

Continuing 7  
Education

Student Zone 12

YEA 14

YEA Tech 15  
Session  
**(FEB 13, 2012  
DEADLINE)**

From the 16  
Historian

Valentines 17  
Dance

Job Postings 20

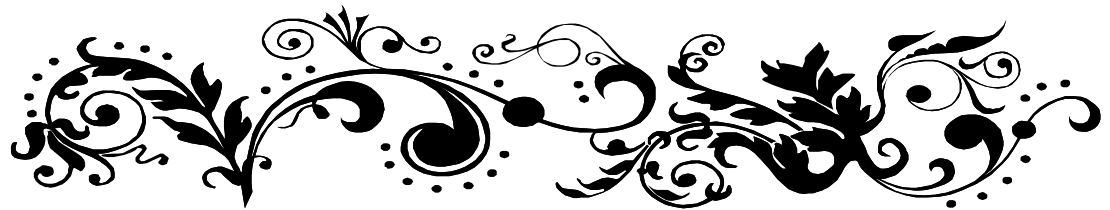
Meeting 21  
Minutes

New Members 23

PAOE Points 23

Society News 24

Government 26



Save the Date

*55<sup>th</sup> Annual ASHRAE Valentine  
Dinner Dance*

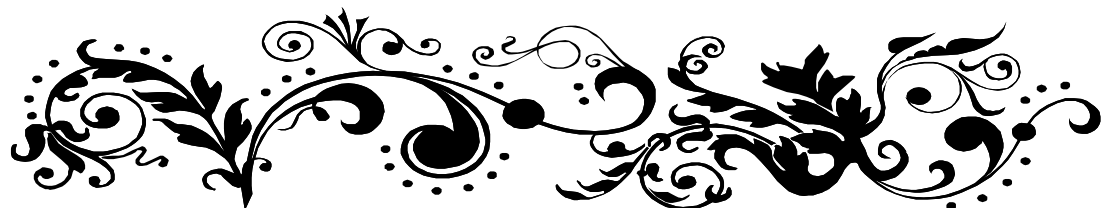
**Friday, February 10, 2012**

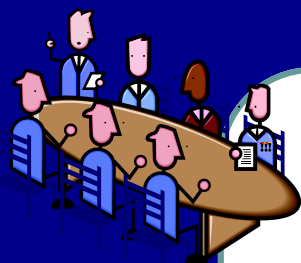
*Inn on Broadway*

*26 Broadway*

*Rochester, New York 14604*

*(refer to pages 17-19 for more details)*





## Chapter Officers

### President

Jeffrey Ellis  
585-232-3440  
ellis@airsystemsbalancing.com

### President Elect

Michelle Sommerman  
585-232-5135  
msommerman@bergmannpc.com

### Vice President/Tech

Robert Wind  
585-341-3172  
rwind@ibceng.com

### Secretary

Edward J. Burns  
585-739-7548  
ejb@mechtechhvac.com

### Treasurer

Christina Walter  
585-486-2148  
cmwalter@trane.com

## Committee Chairs

### CTTC/Programs

Michelle Sommerman 585-232-5135  
msommerman@bergmannpc.com

### CTTC/TEGA

Jeff Davis 585-381-3360(136)  
jdavis@turnerengineering.com

### CTTC/ Refrigeration

Michael Nohle 585-545-5522  
mikenohle@aol.com

### Historian

Lee Loomis 585-738-3079  
leeloom@aol.com

### Membership

Bill Clark 585-507-1961  
wjclark@dayasi.com

### YEA

Chris Lukasiewicz  
585-381-3360 (135)  
clukasiewicz@turnerengineering.com

## Board of Governors

William Murray (3rd Year)  
585-641-7121  
bmurray@ec4b.com

Tim Duprey (3rd Year)  
585-330-6430  
DupreyT@ifsinc.net

Eric C. Smith (2nd year)  
585-381-3360  
esmith@turnerengineering.com

Jeff Close (2nd year)  
585-289-6816  
Jeff.close@pres-services.com

William J. Clark (1st Year)  
585-507-1961  
wjclark@dayasi.com

Jaimee Reynolds (1st year)  
585-325-6004  
jreynolds@pathfinder-ea.com

Beth Smith (1st year)  
585-272-0110  
bsmith@vpsupply.com

### Student Activities

Al Rodgers 585-325-6004  
arodgers@pathfinder-ea.com

### Newsletter Editor

Jaimee Reynolds 585-325-6004  
jreynolds@pathfinder-ea.com

### Attendance & Reception

Timothy Duprey 585-330-6430  
DupreyT@ifsinc.net

### Building Simulation User's Group (BSUG)

Bill Bishop 585-325-6004  
wbishop@pathfinder-ea.com

### Webmaster

Kevin Wind 585-263-1280  
kwind@rochester.rr.com

### Research Promotion

Jeff Close 585-289-6816  
Jeff.close@pres-services.com

Beth Smith 585-272-0110(3010)  
bsmith@vpsupply.com

## ASHRAE 2011-2012 Meeting Schedule

Date	Event	pdh / Theme	Location	Schedule
09/12/11	Annual ASHRAE Clambake James Bittker, NYSERDA New Construction Program	Membership Promotion	Burgundy Basin	5:00 PM
10/10/11	Dick Sherren Rooftop Wind Restraints	( 1 ) pdh available	Mario's	12:00 PM
11/14/11	Stanley Mumma, DL Region III Chilled Surfaces and DOAS	( 1 ) pdh available	Mario's	12:00 PM
12/12/11	BIM - Joint ASPE Meeting John Jansen, Imaginit Technologies	Research Recognition (1) pdh available	Mario's	12:00 PM
01/09/12	Tribute to Lynn Bellenger Enid Cardinal, Director of Sustainability at RIT Sustainability at RIT Bill Bishop - 5 min on BSUG	Awards Student Night	Mario's	12:00PM
02/10/12	Annual ASHRAE Valentines Dinner Dance	---	Inn on Broadway	7:00 PM
02/13/12	Steve Beck ASHRAE IAQ Guide, current work on Building Performance Metric	Membership Promotion  ( ) pdh available	Mario's	12:00 PM
03/12/12	Drury Crawley, DL Region III AEDG's to Net-Zero Buildings and Future Trends in Simulation	Research Promotion ( 1 ) pdh available <i>pending</i>	Mario's	12:00 PM
04/09/12	Refrigeration Tour Wegmans Market St - TBD	Student Night ( 1 ) pdh available <i>pending</i>	TBD	TBD
05/15/12	Annual ASHRAE Golf Outing and Picnic	---	Ravenwood Golf Club	9:30 AM Golf 4:30 - 8:00 Picnic

### Mission Statement

ASHRAE will advance the arts and sciences of heating, ventilation, air conditioning, refrigeration and related human factors to serve the evolving needs of the public and ASHRAE members.



***“Advancing HVAC&R to serve humanity and promote a sustainable world”***

### Vision Statement

- will be the global leader in the arts and sciences of heating, ventilation, air conditioning and refrigeration.
- will be the foremost, authoritative, timely and responsive source of technical and educational information, standards and guidelines.
- will be the primary provider of opportunity for professional growth, recognizing and adapting to changing demographics, and embracing diversity.



Jeff Ellis, 2011-2012 President

I would like to thank John Jansen for his presentation on “The Path to Building Information Modeling.” The use of computer-aided design within our industry is an emerging field, and getting more sophisticated with time as more designers, engineers, and contractors learn how to use this tool for stream-lining the HVAC design process.

Please note that our January meeting is planned to be a lunch meeting at Mario’s. The late Lynn Bellenger was scheduled to be our speaker. In her memory, we will use a portion of that meeting to pay tribute to Lynn and remember some of her many accomplishments. Enid Cardinal, the new Director of Sustainability at RIT, will be discussing the direction of sustainability on campus. We hope to see you there.

Please take time to explore the updated Rochester ASHRAE Chapter website at <http://rochester.ashraechapters.org/> and let us know what you think.

Thanks for the continued support of YOUR local chapter of ASHRAE.



## *Congratulations to our ASHRAE award winners*

Al Rodgers—Student Activities, Most Improved, Honorable Mention

Chris Walter—Black Ink Award

Jeff Close—Research Promotion



# Monthly Meeting

## January ASHRAE Meeting

**Monday, January 9th 2012**

**Location:** Mario's Italian Steakhouse 2740 Monroe Ave, Rochester

**Time:** 12 PM with Buffet Lunch Served

**Cost:** \$25.00, PayPal On-Line *or* cash/check at door

**Speaker:** Enid Cardinal, Senior Sustainability Director at RIT

## Sustainability at RIT

As Senior Sustainability Advisor to the Rochester Institute of Technology (RIT), Enid Cardinal is responsible for developing, implementing and administering policies and programs that will help RIT become an international model for best practices in campus sustainability operations and programs. Her talk will focus on sustainability issues that RIT will address in the future, including climate neutrality and a reduction in greenhouse gases as outlined in the American College & University Presidents' Climate Commitment.

RIT appointed Enid Cardinal senior sustainability advisor for the university in 2011. Cardinal is a LEED-accredited professional with a background in socially responsible investing and environmental policy. Cardinal previously served as director of the Office of Sustainability at Illinois State University. Prior to ISU, she held positions as an independent consultant, social analyst and a project controller.

Cash or check payment still accepted at the door with your reservation.

Remember, as an option, we now have on-line payments available via PayPal.

<< ***Pay for Meeting Registration online via PayPal (no PayPal account required)*** >>  
*Use the following link:* <http://rochester.ashraechapters.org/meetings.html>

Please RSVP no later than noon Thursday January 5th to Tim Duprey  
 Phone: 585.402.5285 or Email: [dupreyt@ifsinc.net](mailto:dupreyt@ifsinc.net)

Respectfully,

*Tim, Attendance Chair*

### **Attention Members:**

Just a reminder that all members that reserve a spot for the monthly meeting will be responsible for that reserved space.

Members have until 12:00 pm the day of the RSVP deadline to cancel their meeting reservation.

Failure to comply with this rule will result in the attendee being responsible for the payment of that reservation.

ASHRAE Rochester Chapter Officers

# Join ASHRAE in Chicago!

**2012 ASHRAE Winter Conference**  
**Jan. 21-25**  
**Palmer House Hilton**  
**Chicago**



**Technical Program** — join your fellow members and industry leaders to discuss and examine the latest topics in the building industry, such as high performing buildings and integrated design.

**Virtual Conference** — if you can't make it to Chicago, take advantage of the knowledge shared in the technical program with the Virtual Conference.

**AHR Expo** — The ASHRAE co-sponsored AHR Expo takes place Jan. 23–25 at McCormick Place. [www.ahrexpo.com](http://www.ahrexpo.com).

**ASHRAE Certification** — all six certification programs are being offered: Building Energy Assessment Professional; Building Energy Modeling Professional; Commissioning Process Management Professional; High-Performance Building Design Professional; Healthcare Facility Design Professional; and Operations and Performance Management Professional.

**ASHRAE Learning Institute** — five Professional Development Seminars and 14 Short Courses are offered, including a new course on the basics of combined heating and power systems and updates to courses covering Standards 62.1 and 90.1 reflect changes in the 2010 versions of these standards.

*(Refer to Page 8 for a list of full-day and half-day short courses)*

[www.ashrae.org/chicago](http://www.ashrae.org/chicago)

# THE GRILLROOM CHOPHOUSE & WINEBAR



ASHRAE WINTER MEETING 2012  
REGION I DINNER

Chicago is known for Steaks. Join the members of Region I for Dinner at a near by steakhouse for an evening of fun. Please RSVP by January 18th, 2012 to Heather Nowakowski via e-mail [heather.nowakowski@roswellpark.org](mailto:heather.nowakowski@roswellpark.org). Clips of the menu are below:

SUNDAY JANUARY  
22, 2012

7:00 PM

33 W MONROE ST,  
CHICAGO, IL 60603  
(BTWN S STATE &  
DEARBORN ST)

## SEAFOOD

HORSERADISH CRUSTED SALMON / White Wine Thyme Broth	22
AMERICAN WHITEFISH / Lemon Caper Butter	19
AHI TUNA / Roasted Eggplant / Red Wine Reduction	29
LAUGHING BIRD SHRIMP / DeJoghne Style	26
RAINBOW TROUT / King Crab Crust / Srirachi Butter	25

## THEATRE FAVORITES

LEMON-ROSEMARY CHICKEN / Vesuvio Potatoes	19
HERB-PARMESAN CRUSTED VEAL CHOP / Arugula Salad	39
BABY BACK RIBS / 5 Spice Ginger BBQ Sauce	HALF 15 FULL 22
APPLE BACON WRAPPED MEATLOAF / Shitake Demi	18
BUCANTINI FRESCA / Cherry Tomatoes / Fresh Basil / Mozzarella	16
BEEF STROGANOFF / Filet Tips / Pappadelle / Veal Redux	21
FARM FRESH VEGETABLE PLATE / Chef's Creation	18

## SIDES AND VEGETABLES

WOOD SMOKED MUSHROOM & ONIONS / Veal Demi Butter	8
STEAMED OR GRILLED ASPARAGUS / Lemon Butter	9
BROCCOLINI-SPINACH DUO / Olive Oil / Roasted Garlic	8
FRESH SHUCKED CREAMED CORN	9
CRISPY YUKON GOLDS / Parmesan Herbs	8
MICHIGAN WILD RICE / Sun Dried Cranberries	7
RED FLANNEL HASH / Caramelized Onions / Apple Bacon	9
BUTTERY YUKON MASHED POTATOES	8
GIANT BAKED POTATO / Sweet Onion Butter	8

Dinner is within walking distance of the Palmer House. The bill will be one check per table, please bring cash to cover the semi-annual "dutch treat" dinner.

Reserve your spot TODAY...

Contact: Heather L. Nowakowski

E-mail: [heather.nowakowski@roswellpark.org](mailto:heather.nowakowski@roswellpark.org)

## MEAT AND CHOPS

SINGLE CUT FILET 8OZ	29
DOUBLE CUT FILET 12OZ	39
BONE IN FILET MEDALLIONS	36
NY STRIP 14OZ	41
RIB EYE (TOMAHAWK BONE IN) 26OZ	49
PORTERHOUSE 22OZ	54
CENTER CUT SIRLOIN 8OZ	27
BUTCHER BLOCK PORK CHOP	24
AUSTRALIAN LAMB T-BONES	31

## ADDITIONS

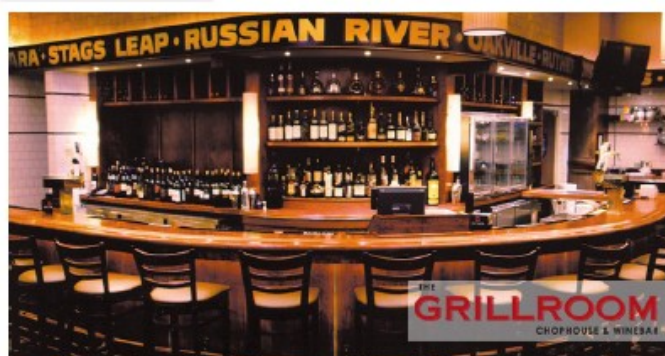
OSCAR STYLE	15
SURF N TURF ANY STEAK WITH 6OZ. LOBSTER TAIL	24
GRILLED JUMBO SHRIMP SKEWER	12
FRIED EGG	3
WOOD SMOKED MUSHROOMS	4

## SAUCES

Béarnaise
Roquefort
Peppercorn
Horseradish Cream
Chimichurri
Red Wine Demi
5 Spice BBQ
ADD 2 EACH

## STEAK TEMPS

RARE	Red Cool Center
MEDIUM RARE	Red Warm Center
MEDIUM	Pink Hot Center
MEDIUM WELL	Hot Slightly Pink Center
WELL DONE	Cooked Throughout



# NEW ASHRAE COURSES IN CHICAGO

## *Full-Day Courses*

### **The Commissioning Process in New & Existing Buildings**

Saturday, Jan.21, 2012, 8:00 am-3:00 pm, Palmer House Hilton, Instructor: Rick Casault, P.E., Member ASHRAE

### **Data Center Energy Efficiency**

Saturday, Jan.21, 2012, 8:00 am-3:00 pm, Palmer House Hilton, Instructors: Don Beaty, P.E., Member ASHRAE and Roger Schmidt, P.E., Member ASHRAE

### **Integrated Building Design**

Saturday, Jan.21, 2012, 8:00 am-3:00 pm, Palmer House Hilton, Instructors: Charles Gulledge, P.E., Member ASHRAE and Lisa Rosenow, Member ASHRAE, LEED AP

### **Using Standard 90.1 to Meet LEED Requirements**

Tuesday, Jan.24, 2012, 9:00 am-4:00 pm, McCormick Place, Instructors: McHenry Wallace, P.E., Member ASHRAE and Joseph Deringer, AIA, Member ASHRAE

### **Energy Modeling Best Practice and Applications: HVAC/THERMAL** (Co-sponsored by IBPSA-USA and RMI)

Tuesday, Jan.24, 2012, 9:00 am-4:00 pm, McCormick Place, Instructor: Erik Kolderup, P.E., Member ASHRAE (Kolderup Consulting), Kendra Tupper, P.E., Member ASHRAE (Rocky Mountain Institute)

## *Half-Day Short Courses*

### **Understanding Air-to-Air Energy Recovery Technologies**

Sunday, Jan.22, 2012, 2:00 pm-5:00 pm, McCormick Place  
Instructor: Paul Pieper, P.Eng., Member ASHRAE

### **Understanding & Designing Dedicated Outdoor Air Systems (DOAS)**

Sunday, Jan.22, 2012, 2:00 pm-5:00 pm, McCormick Place, Instructor: Stanley Mumma, Ph.D., P.E., Fellow/Life Member ASHRAE

### **Application of Standard 62.1-2010: Multiple Spaces Equations**

Sunday, Jan.22, 2012, 2:00 pm-5:00 pm, McCormick Place  
Instructor: Hoy Bohanon, P.E., Member ASHRAE

### **Basics of High Performance Building Design**

Monday, Jan. 23, 2012, 8:30 AM-11:30 AM, McCormick Place  
Instructor: Tom Lawrence, Ph.D., P.E., Member ASHRAE

### **Energy Management in New & Existing Buildings**

Monday, Jan. 23, 2011, 8:30 AM-11:30 AM, McCormick Place, Instructor: Richard Pearson, P.E., Fellow/Life Member ASHRAE

### **Advanced High Performance Building Design**

Monday, Jan. 23, 2011, 2:30 PM-5:30 PM, McCormick Place  
Instructor: Jeff Ross-Bain, P.E., Member ASHRAE, BEMP

### **Complying with Standard 90.1-2010: Envelope/Lighting**

Monday, Jan.23, 2012, McCormick Place, 8:30 am-11:30 am  
Instructor: Joseph Deringer, AIA, Member ASHRAE

### **The Commissioning Process & Guideline 0**

(Co-sponsored with BCA, IES, NEBB)

Monday, Jan.23, 2012, McCormick Place, 2:30 pm-5:30 pm  
Instructor: Walter Grondzik, P.E., Fellow ASHRAE

### **Complying with Standard 90.1-2010: HVAC/Mechanical**

Monday, Jan.23, 2012, McCormick Place, 2:30 pm-5:30 pm  
Instructor: McHenry Wallace, P.E., Member ASHRAE

### **Evaluating the Performance of LEED-Certified Buildings**

Monday, Jan.23, 2012, McCormick Place, 2:30 pm-5:30 pm  
Instructor: Mark Stetz, P.E., Member ASHRAE

### **Combined Heat & Power Systems**

Tuesday, Jan.24, 2012, McCormick Place, 9:00 am-12:00 pm  
Instructor: Lucas Hymann, P.E., Member ASHRAE

### **Healthcare Facilities: Best Practice Design**

Tuesday, Jan.24, 2012, McCormick Place, 9:00 am-12:00 pm  
Instructors: Robert Cox, P.E., Member ASHRAE, Daniel Koenigshofer, P.E., Member ASHRAE, HFDP

### **Project Management for Improved IAQ**

Tuesday, Jan 24, 2011, 9:00 AM-12:00 PM, McCormick Place  
Instructor: Hoy Bohanon, P.E., Member ASHRAE

### **Healthcare Facilities: Best Practice Applications**

Tuesday, Jan.24, 2012, McCormick Place, 1:00 pm-4:00 pm  
Instructors: Robert Cox, P.E., Member ASHRAE, Daniel Koenigshofer, P.E., Member ASHRAE, HFDP

### **Designing Toward Net Zero Energy Commercial Buildings**

Tuesday, Jan.24, 2012, McCormick Place, 1:00 pm-4:00 pm  
Instructors: Dunstan Macauley, P.E., Member ASHRAE, Frank Mills, P.Eng., Member ASHRAE



# ASHRAE'S HVAC DESIGN ESSENTIALS

## Real-world HVAC Design Skills You Can Use Today

ASHRAE created the HVAC Design Essential Workshop to provide intensive, practical training for HVAC designers and others involved in the delivery of HVAC services. Developed by industry-leading professionals, this workshop provides you with the fundamental and technical aspects of HVAC design in commercial buildings.

In three days, you will gain practical skills and knowledge in designing, installing and maintaining HVAC systems that can be put to immediate use. The workshop provides real-world example of HVAC systems, including calculations of heating and cooling loads, ventilation and diffuser selection using the newly renovated ASHRAE Headquarters building as a living lab. Engineered drawings of the ASHRAE Headquarters renovations will be incorporated to expose you to plan reading and graphical understanding of system design.

### Workshop Topics:

- Fundamentals
- Heating/Cooling Load Calculation
- System Selections
- Common System and Components
- Cooling System
- Basic Design of Hydronic Systems
- Basic Design of Air Systems
- Control/BAS Commissioning
- Sustainable Design
- Project Management and Other Soft Skills
- Introduction to Technical Sales

#### **BONUS!**

**Enroll 3 or more participants from the same company and save!**

### Who Should Attend:

#### **Professionals at:**

- Mechanical design firms
- Architectural firms
- Mechanical consulting firms
- Facility management departments
- Sales engineering firms
- Utility companies

**When:** January 11-13, 2012

#### **Where:**

ASHRAE Foundation Learning Center,  
Atlanta, GA

**Cost:** \$1,189 (ASHRAE Member: \$939)



**Target Audience:**

- Any Direct or Indirect AM who has not had the opportunity to attend GTP
  - Perhaps a local new hire - that can't commit to 6-months at GTP
  - Someone who was promoted from within
  - A new hire that came from outside our industry
- Any BAS AE, PM, PA, Application Specialist or Estimator who wants to broaden their base in the fundamentals

**Primary Benefit:** Students will enjoy learning as much practical knowledge as possible about Air Conditioning Fundamentals. Students won't waste a great deal of time in theory. The typical student can immediately apply what he/she learns upon returning to their office. Past attendees have boosted their overall confidence and found many ways to apply their recently acquired knowledge.

---

**2012 Course Offerings (Rochester, NY):** (these classes are 3-days; Tuesday - Thursday)

---

- [ ] Feb 14-16 '**Airside Fundamentals-I**' (Load Design and Psychrometrics)
- [ ] Mar 13-15 '**Airside Fundamentals-II**' (Duct Design, Fans & Fan Laws & Acoustics)
- [ ] Apr 17-19 '**Refrigeration Fundamentals**' (Refrig Basics, Refrig Piping, Refrig & Our Environment)
- [ ] May 15-17 '**Systems Fundamentals**' (HVAC Systems, Dehumidification, IceStorage-LowTempAir, Bldg Pressurization)
- [ ] Jun 12-14 '**Energy Efficient Design Fundamentals**' (Chiller-Side, Air-Side, System Controls, Energy Recovery)
- [ ] Aug 7-9 '**Product Fundamentals**' (AHU, WSHP, RTU, Chillers, Fan Coils, UV)
- [ ] Sep 18 & Oct 2-30 '**Introduction to Air Conditioning Fundamentals**' (6-Tuesday evening series covering each of the above topics in a 3-hour 'big-picture overview')

*Note: For more information about each of these classes, log onto [BeckerLearning.com](http://BeckerLearning.com)*

**Registration Deadline:** Each course will be filled on a first-come-first-reserved basis.

**Payment Deadline:** Complete Payment must be received prior to the start of the class.

**Contact:** Joe Becker, Becker Learning / 5980 Sheppard Road / Dansville, NY 14437  
Phone: (585) 317-0000 Email: [Joe@BeckerLearning.com](mailto:Joe@BeckerLearning.com)

---

**More Details for 3-day courses:**

---

**Where:** We will hold the 3-day classes at a Homewood Suites Hotel in the greater Rochester area - exact location to be determined no later than 2-weeks prior to the start of class. You will be able to reserve a room for the Becker Learning rate of \$104/night if you tell them you are part of the Becker Learning group.

\* Class Registration: 10 or less, **Henrietta** - 2095 Hylan Drive, Rochester, NY 14623 - (585) 334-9150

\* Class Registration: >10, **Greece** - 400 Center Place Drive, Rochester, NY 14615 - (585) 865-8534

**Time:** We will start each morning at 8:00 AM and end by 5:00 PM (except Thursday when we end by 4:00 PM for travelers)

**Food:** Lunch, mid-morning and mid-afternoon snacks & drinks are provided.

**What is not included:** Transportation, other meals & lodging.

**Travel: Arrival:** Since the seminar starts at 8:00 a.m., plan to arrive the night before.

**Departure:** You can book flights out of Rochester International Airport as early as 5:15 p.m. on Thursday since both of our Hotel locations are less than 10-minutes from the airport.

---

**More Details for 6-night Fall Intro Series:**

---

**Where:** The specific Henrietta, NY location will be decided no later than 2-weeks before the class & attendees will be emailed the appropriate information with plenty of notice. The class will run from 5:00 - 8:00 pm. No meal is provided, so attendees should catch dinner before the class starts.

**Registration:** Please fill out this form for each person attending, and mail along with a **Check** or **Purchase Order** (made out to 'Becker Learning') to:

**Becker Learning / 5980 Sheppard Road / Dansville, NY 14437**

2012 Courses:             Airside-I             Airside-II             Refrigeration             Systems

(check all that apply)             Energy Eff. Design             Products             Fall 6-night Intro Series

Name: \_\_\_\_\_ Title: \_\_\_\_\_

Trane Sales Office: \_\_\_\_\_

Address: \_\_\_\_\_

Phone: (       )

Email: \_\_\_\_\_

Type	# of Courses	\$/course	Total Cost \$	Check # or PO #
3-day		\$1,100		
6-night		\$550		

*Authorizing Person*

Printed Name	Signature	Date

**\*\*\*If a PO is given, full payment must be received prior to the first day of class.**

**Cancellation Policy:**

- If someone cancels 60-days prior to the start of the class => no cancellation charge.
- If someone cancels 30-60 days prior to the start of class => 50% cancellation charge
- If someone cancels less than 2-weeks before the start of class, or simply doesn't show up => charged the full amount

**Teaching Methodology:**

Similar to the way Joe taught nine classes in the Graduate Training Program of The Trane Company, students will learn a concept and then immediately apply this new knowledge with an application problem. Quiz/testing will also be used to measure the overall effectiveness of the teaching. In this way, the program receives continual improvement through direct feedback.

**About the Instructor:**

Joe Becker is a graduate of the University of Wisconsin-Madison with degrees in Naval Science and Industrial Engineering (1979). He is also a Graduate from the U.S. Naval Nuclear Power School at Mare Island, California (1975). Joe is a registered Professional Engineer.

After nine years in the Navy, Joe resigned his Commission in the Civil Engineer Corps. Since graduating from GTP's class of 83-II, he worked as a Systems Engineer in C.D.S., Marketing Engineer in the Variable Air Volume Product Group, Manager of Technical Training in GTP, Sales Engineer, Sales Manager in Rochester/Syracuse & ISL for NE Territory. Joe currently works part-time for Trane's NE Territory and provides technical training through Becker Learning.



# ASHRAE Student Membership Application

## What You'll Get With Your ASHRAE Student Membership!

### What's "Cool" In ASHRAE

- ASHRAE promotes energy efficiency, savings and recovery
- ASHRAE reports on building controls, automation and integration
- ASHRAE focuses on green building issues and green technology
- ASHRAE maintains standards for indoor air quality
- ASHRAE promotes solar and other alternative energy sources
- ASHRAE offers certification programs, online learning opportunities and courses and seminars at ASHRAE Conferences

### How Can ASHRAE Help You?

- Provide access to new technology
- Offer professional development opportunities
- Create opportunities for networking
- Offer online continuing education programs and eLearning programs

### Student Member Benefits

- Access to members-only web pages
- Discounts on ASHRAE Handbooks
- Monthly ASHRAE Journal - print and digital
- HVAC&R Industry and Society Connections eNewsletters
- Complimentary ASHRAE Annual and Winter Conference registration (AHR Expo, Student Program, Technical Sessions)
- Virtual online HVAC&R resume posting, job and internship searching program

### ASHRAE Student Member Opportunities

- Society and chapter-level scholarships for both undergraduate and graduate engineering students
- Discounts for student members on select publications, go to [www.ashrae.org/bookstore](http://www.ashrae.org/bookstore) for more information
- Student Design Competition
- Networking with local ASHRAE Chapters
- Senior Undergraduate Project Grant Program
- At the student branch level, you'll enjoy meeting other students with similar interests - if your school hasn't yet started a student branch, take charge and contact a faculty member and ask for help on getting started!

You can continue your student membership after college with the ASHRAE SmartStart Program. After you graduate, you pay \$20 for the first year, \$50 for the second and the third years before advancing to regular member dues!

**Join ASHRAE students on Facebook  
Visit [www.ashrae.org/students](http://www.ashrae.org/students) to join!**



FIRST NAME:

LAST NAME:

DATE OF BIRTH (mm/dd/yyyy)

Current Mailing Address: (this will be where all correspondence will be sent unless otherwise specified)

Street Address: \_\_\_\_\_ Apt. # \_\_\_\_\_ City: \_\_\_\_\_

State/Province: \_\_\_\_\_ Postal Code: \_\_\_\_\_ Country: \_\_\_\_\_

Email: \_\_\_\_\_ Alternate email: \_\_\_\_\_ Phone: \_\_\_\_\_

Permanent Mailing Address: (during the Summer Months and after graduation)

Check if Current Address is the same as Permanent Address

Street Address: \_\_\_\_\_ Apt. # \_\_\_\_\_ City: \_\_\_\_\_

State/Province: \_\_\_\_\_ Postal Code: \_\_\_\_\_ Country: \_\_\_\_\_

Email: \_\_\_\_\_ Alternate email: \_\_\_\_\_ Phone: \_\_\_\_\_

ASHRAE protects contact information provided by its members and customers. To view ASHRAE's privacy policy visit [www.ashrae.org/privacy-policy](http://www.ashrae.org/privacy-policy).

All student applicants must have the name and member number of an ASHRAE member serving as their student sponsor. If your Student Branch Advisor is an active Associate or Full member, he/she can serve as your sponsor. If you need assistance locating a sponsor, please email [students@ashrae.org](mailto:students@ashrae.org) or call 678-539-1212. Also, you must list the name, phone and email address of your faculty advisor or course instructor.

Sponsor Name: \_\_\_\_\_ ASHRAE Member #: \_\_\_\_\_

Advisor/Instructor: \_\_\_\_\_ Phone: \_\_\_\_\_

Email: \_\_\_\_\_

To receive your subscription to the ASHRAE Journal, please answer the following questions by entering the appropriate codes in the spaces provided.

Which best describes your firm? \_\_\_\_\_

- 11. Consulting Engineering
- 12. Architect/Architectural & Eng Services
- 15. Design/Build
- 21. Contractor
- 26. Property Mgmt & Dev
- 31. Industrial Facility
- 41. Commercial Facility
- 42. Government, Healthcare, Education
- 43. Utility
- 51. Manufacturer/HVAC&R Equipment
- 61. Manufacturer's Representative
- 62. Sales Engineering
- 71. Wholesaler or Distributor
- 83. Library
- 84. Technical, Professional or Trade Association
- 86. Student \*\*\*
- 91. Other (Please Specify) \_\_\_\_\_

Which best describes your title? \_\_\_\_\_

- B. President
- C. Partner
- D. Associate
- E. Owner
- F. Vice President
- G. Vice President Eng, Chief Engineer
- K. Design Engineer
- L. Project/Application Engineer
- O. Facility Engineer/Manager
- P. Research/Development Engineer
- R. Sales Engineer, Sales
- S. Purchasing Agent
- T. Draftsperson
- U. Estimator
- W. Technician
- X. Instructor, Professor
- Y. Student \*\*\*
- Z. Librarian
- ZZ. Other (Please Specify)

ASHRAE Society Dues include \$6.00 for ASHRAE Journal. This amount is not deductible from Membership dues.

I would like to participate in the activities of the \_\_\_\_\_ ASHRAE Chapter.

School Name: \_\_\_\_\_

Street Address: \_\_\_\_\_ City \_\_\_\_\_ State: \_\_\_\_\_

Country: \_\_\_\_\_ Postal Code \_\_\_\_\_

Expected Graduation Date: \_\_\_\_\_

Full time:  Part time:  Degree: \_\_\_\_\_

\*Classification: Freshman  Sophomore  Junior  Senior  Masters/PhD.

ASHRAE Student Membership \$20.00 USD

ASHRAE Handbook - Fundamentals  IP  SI

(you will receive the most current edition of Fundamentals)

More than 900 pages of HVAC&R technical information and it includes the CD! (List Price \$195)

Student Member Price: \$49.00 USD \$ \_\_\_\_\_ USD

Total \$ \_\_\_\_\_ USD

\*Additional books are available at [ashrae.org/studentbookstore](http://ashrae.org/studentbookstore)

\*Please allow up to 30 days to receive new member packets. For U.S. book orders, allow 3-5 business days from processing. For international locations and Canada, allow 7-10 business days from processing.

\*\*Please complete the ENTIRE application to ensure accuracy. Incomplete applications will NOT be processed.\*\*

Method of payment:  VISA / Master Card  American Express  Diner's Club  Check or money order enclosed\*

Card Number: \_\_\_\_\_ Expiration Date \_\_\_\_\_ CW No. \_\_\_\_\_ Amount: \_\_\_\_\_

Signature: \_\_\_\_\_ Date: \_\_\_\_\_

Print Name (as it appears on card): \_\_\_\_\_

\*Checks will be accepted in U.S and Canadian funds. Credit Card payments will be accepted in U.S. funds only.



ROCHESTER CHAPTER COMMITTEE REPORT  
2011 December 16

### MISSION STATEMENT

The primary objective for the YEA Committee is to enhance our member benefits for young professional ASHRAE members by identifying activities and services focused on their needs.

- National YEA Committee

### NEW BUSINESS

#### ASHRAE Group Learning Texts Program:

**First group learning text title: The Fundamentals of Water System Design**

**First group learning session: Mon March 5<sup>th</sup> from 6pm-8pm (location TBD)**

Next YEA Social Hour: to be determined

### OLD BUSINESS AND IN PROGRESS

Plan technical programs:

- ASHRAE Group Learning Texts Program
- Review benefits of ASHRAE membership
- Fundamental Sessions

ASHRAE standards

System design

EIT/PE Exam study groups

Plan technical tours

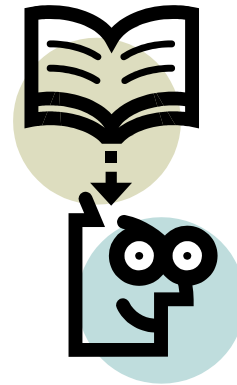
- Seneca Park Zoo
- RIT Ice Rink with ice skating
- Blue Cross Arena with Amerks hockey game

YEA Leadership Weekend: Spring 2012

Several members interested in attending

Student Outreach:

- Contact Monroe Community College
- Plan "career night" to help students with resumes and discuss careers in HVAC



### ANNOUNCEMENTS—see page 15 for details

#### **Fundamentals of Water System Design Class in March 2012!**

The Rochester chapter is planning a lecture series on The Fundamentals of Water System Design. This will be a 5 week program with one session per week. It will be conducted by multiple ASHRAE volunteers with considerable experience in the field and the curriculum will be based on the ASHRAE Learning series material provided by Society. It is currently being organized by Chris Lukasiewicz and Jaimee Reynolds and is planned for March 2012. The cost will be \$60 per person. If you are interested in taking this class, contact Chris ([clukasziewicz@turnerengineering.com](mailto:clukasziewicz@turnerengineering.com)) or Jaimee ([jreynolds@pathfinder-ea.com](mailto:jreynolds@pathfinder-ea.com)).

# Fundamentals of Water System Design Class

## March 2012

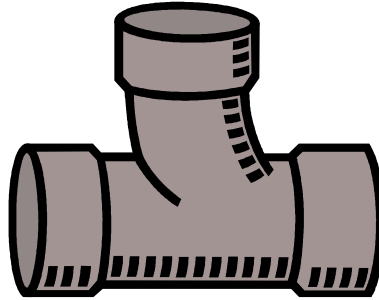
### What You Will Learn

You will develop an understanding of the basic concepts of hydronic system operation and design including piping systems, pipe materials and fittings, centrifugal pumps, terminal units, expansion tanks and water chillers. After completing the course, you should know:

- The components of closed and open hydronic systems.
- The basic concepts of piping system design.
- The different types of pipe used in hydronic systems.
- How centrifugal pumps operate.
- How to match pumps to systems.
- What variables are involved in terminal unit control.
- How to optimize water chiller operation.

### Course Content

- **Water System Design Components** -- Introductory concepts, basic system components, heat transfer in hydronic systems and load systems.
- **Piping System Design** -- Basic considerations, design philosophy, sizing piping, and flow rate measurement.
- **Pipe Materials and Fittings** -- Pipe materials, corrosion, valves and fittings, backflow-prevention devices, and pipe selection.
- **Centrifugal Pumps** -- Types of pumps, pump selection and system design considerations.
- **Terminal Unit Performance and Control** -- Types of terminals, performance and control, system control characteristics, and system control configurations.
- **Expansion Tanks and Air Elimination** -- Open and closed water systems, hydronic accessories, and sizing expansion tanks.
- **Piping System Development** -- Piping system design, direct return analysis, primary-secondary analysis, types of pumps and valves, primary-secondary application study, antifreeze solutions for low temperature applications, and pumping design factors.
- **Matching Pumps to Systems** -- Matching the pump to the system, parallel pumping, series pumping, standby pumps, trimming pump impellers, two-speed pumping, variable speed pumping and source distribution pumping.
- **Water Chillers and Load Control** - Basic water chiller components, refrigeration cycle, heat transfer chiller, refrigeration power, chiller types and control, chiller piping arrangements, chiller energy performance and thermal storage.



**HOW TO ENROLL—You Must be an ASHRAE Member to Participate.**

**YOU MUST RESERVE YOUR SPOT WITH ADVANCE PAYMENT BY MONDAY, FEBRUARY 13 IN ORDER TO RECEIVE THE ASHRAE WATER SYSTEMS DESIGN TEXT.**

**ASHRAE Member: \$60** (Normally \$128 through ASHRAE's self study texts)

Classes will be held on Monday evenings starting on March 5, 2012 from 600pm-800pm. Pizza and soda will be provided for participants. Location will be determined based on class size. If your office is willing to host, send an email to Chris Lukasiwicz ([clukaszewicz@turnerengineering.com](mailto:clukaszewicz@turnerengineering.com)) or Jaimee Reynolds ([jreynolds@pathfinder-ea.com](mailto:jreynolds@pathfinder-ea.com))

Please reserve your spot by Monday, Feb 13 by sending a \$60 check (for ASHRAE—Rochester Chapter) to:  
 Rochester Engineering Society  
 Attn: YEA Technical Session  
 150 State Street  
 Rochester, New York 14614-1307

Please include your name, company, and email address so that we can confirm that we have received your reservation. For multiple reservations, please include the proper payment with a list of the attendees.

## REQUEST FOR ASSISTANCE WITH ASHRAE/ROCHESTER HISTORY PROJECT

ASHRAE Rochester Chapter Historian, Lee Loomis is embarking upon a project to develop a written history of our Chapter, and he needs your help. If you have any pieces of ASHRAE/Rochester Chapter history; photos, slides, reports, meeting minutes (Committee Meetings, Chapter Meetings or Board of Directors Meetings), event programs (seminars, trade shows, workshops, etc.), please consider offering them to Lee for his project. You may have any of this material returned, if you'd like, otherwise Lee will inventory it, saving that which is memorable, and digitizing some of it, as necessary. So, as you search through your attics, basements and garages, looking for whatever Santa might have hidden for you, and you stumble across some old "ASHRAE Treasures", please drop Lee an e-mail ([leeloom@aol.com](mailto:leeloom@aol.com)), telling him of your discovery, and how he might retrieve it for his project. Remember, in this quest for ASHRAE/Rochester history, there is NO SUCH THING AS JUNK; it's all "TREASURE" until he's had a chance to sort it out. Thanks for your help with this important ASHRAE/Rochester history project.

**Lee M. Loomis**, Historian  
ASHRAE/Rochester Chapter







Save the Date  
for the

*55<sup>th</sup> Annual ASHRAE Valentine Dinner Dance*

**Friday, February 10, 2012**

*Inn on Broadway*

*26 Broadway*

*Rochester, New York 14604*

**7:00 p.m. Reception – Hors d'oeuvres**

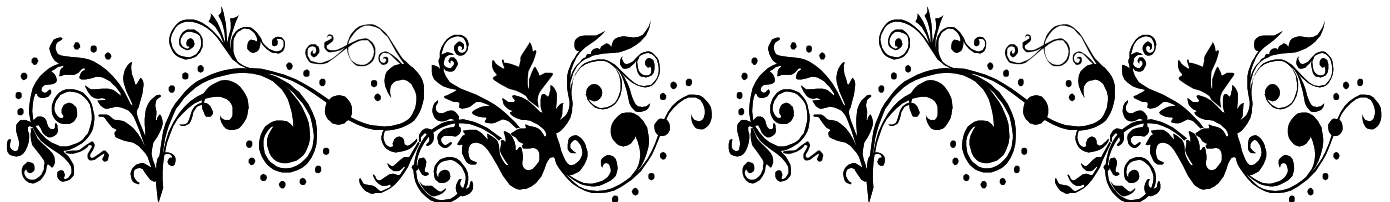
**8:00 p.m. Dinner – as you select**

**9:15 p.m. – Dessert and Coffee**

**Invitations will be sent out in January**

**For more information,**

**please contact Jody McGarry 585.482.3601**





# ASHRAE

*Technology for a Better Environment*

November 28, 2011

Dear ASHRAE Members,

On Friday, February 10, 2012, ASHRAE will be hosting its 55th Annual Valentine Dinner Dance.

This special event will be held at the Inn on Broadway on Friday, February 10, 2012. ASHRAE is asking for your corporate support to donate \$325.00, billed to you as an advertising expense, to help defray the cost of this event. We know that it has been a challenging year, but your sponsorship will enable us to provide you with lively entertainment, a delicious meal, special desserts, and an evening with friends and colleagues you won't soon forget.

As always, we will be offering two complimentary dinners to corporate sponsors. Your sponsorship will be listed in the dinner program and dance flyers, as well as being listed in a full-page advertisement in the R.E.S monthly publication. You will certainly be recognized by your peers as an ASHRAE supporter.

An invoice is attached for your convenience. We thank you for your support and look forward to sharing this fantastic evening with you!

Very truly yours,

Jody McGarry  
ABR Wholesalers  
Valentine Dance Committee

---

*American Society of Heating, Refrigerating and Air-Conditioning Engineers, Inc.*

A N I N T E R N A T I O N A L O R G A N I Z A T I O N



# ASHRAE

Technology for a Better Environment

## Invoice

Advertising for February 2012 Promotion

\$325

Please make check payable to: ROCHESTER CHAPTER ASHRAE and mail to:

Rochester Chapter ASHRAE

c/o ABR Wholesalers, Inc.

ATTN: Jody McGarry

510 North Goodman Street

Rochester, NY 14609

## Commitment

We would like to support the Rochester ASHRAE 2012 Promotion and agree to fulfill our commitment by March 1, 2012.

Company Name\_\_\_\_\_

Signed by\_\_\_\_\_

Date signed\_\_\_\_\_

Please return your check or commitment to ABR Wholesalers, Inc. Thank you.

***\*Don't forget...you will receive two complimentary dinners  
to attend our Valentine Dinner Dance!***

American Society of Heating, Refrigerating and Air-Conditioning Engineers, Inc.

---

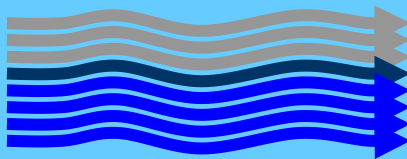
A N I N T E R N A T I O N A L O R G A N I Z A T I O N



This section of the newsletter is reserved for those firms wishing to advertise their desires to hire from the Chapters Membership.

If you are interested in utilizing this FREE service provided by the Rochester Chapter, please contact our Chapter President, Jeff Ellis (585.232.3440) or by email [ellis@airsystemsbalancing.com](mailto:ellis@airsystemsbalancing.com)

This service is available to ASHRAE members for any local firm in our industry looking for knowledgeable persons in the HVAC&R industry.



## **R.F. PECK CO., INC**

889 ATLANTIC AVE  
ROCHESTER, NEW YORK 14629  
Phone: (585) 697-0836 Fax: (585) 697-0839

### **Engineered Products Salesman**

The R.F.Peck Company is a commercial HVAC manufacturer's representative firm serving Upstate New York, Vermont and Western Massachusetts for over fifty years. We are looking for an energetic, self-starting, Engineered Products Salesman for the Greater Syracuse Area. A mechanical engineering degree is preferred but not required.

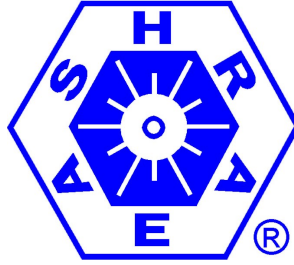
Email resume to [jbrowe@rfpeck.com](mailto:jbrowe@rfpeck.com).

### **Sales Engineer—Meier Supply**

Regional HVAC/R Wholesaler seeks experienced Sales Engineer to work with the Rochester, NY area engineering community to assist with design and specification of HVAC equipment systems. Candidate will demonstrate strong customer service skills, excellent technical knowledge, possess a 4 year Engineering degree, and enjoy being a member of a successful team.

This full time position offers a comprehensive benefit package that includes health insurance, paid vacation, holidays, a matching 401K plan, as well as many other nice perks. Replies will be kept confidential.

Please forward resumes to [spost@meiersupply.com](mailto:spost@meiersupply.com).



**AMERICAN SOCIETY OF HEATING, REFRIGERATING  
AND AIR CONDITIONING ENGINEERS**

**ROCHESTER, NEW YORK CHAPTER**

December 8, 2011 - 12 Noon

LOCATION: VP Supply  
Rochester, NY

President	Jeffrey Ellis	X
President Elect/Program	Michelle Sommerman	
Vice President/Tech Session	Robert Wind	
Secretary Picnic/Golf	Ed Burns	
Treasurer	Christina Walter	X
Immediate Past President/CRC	Jim Browe	
Awards/Student Activities	Al Rodgers	
Buyers Guide	Chuck White	
Hiistorian	Lee Loomis	X
Board of Gov. (1) Membership	Bill Clark	X
Board of Gov. (1)	Beth Smith	X
Board of Gov. (1) Newsletter	Jaimee Reynolds	
Board of Gov. (2)	Eric Smith	X
Board of Gov. (2) Research	Jeff Close	
Board of Gov. (3)	William Murray	
Board of Gov. (3) Attendance	Tim Duprey	X
Website	Kevin Wind	
Refrigeration	Michael Nohle	X
Nominating	Jeff Davis	
Valentine's Dance	Jody M. McGarry	
Publicity	Mark Kukla	
YEA	Chris Lukasiewicz	X

# Meeting Minutes

**Roll Call:** The above noted individuals were present.

**Call to Order:** 10:00 am by Jeff Ellis

**Minutes:**

Previous Meeting minutes approved.

**Treasurer Reviewed Budget:**

Report submitted by Chris Walter with account and fund balances. Paypal checking account monies transfer complete to normal operating account. Balance of \$200.00 to be left in Paypal checking. Monies to be moved monthly.

**Program Tech Sessions:**

January meeting scheduled for 1/9/2012 lunch meeting at Mario's. Tribute to Lynn Bellenger. Enid possible speaker. April meeting will be refrigeration tour.

**Membership** – Bill Clark reported 241 active members, 2 new members & 8 delinquent members.

**Attendance** – Tim submitted report. 89 attendees at the November meeting. December Joint ASPE meeting reservations are lower than expected.

**YEA** – Feb. and March - \$ 60.00 – Study Guide for class, Open to anyone there will be a series of classes. 3 – Different processes – 1<sup>st</sup> Hydronic.

**Research** – Endorsement made in Lynn Bellenger name from region I. Next year's coin to have Lynn's name on it.

**Refrigeration** – Tour of Wegman's scheduled for April. Market Street location. Dinner meeting. Meeting will be joint with RSES.

# Meeting Minutes (continued)

**News Letter** – Two students interested in the winter meeting in Chicago. Pay for transportation, lodging and \$50.00 for food.

**Buyers Guide** – Not on track as previously reported, that we can tell ? Reimburse for adds in buyers guide.

**Historian** – After the first of the year a history of region I Rochester Chapter will be developed. Please send out a plea to past and current ASHRAE members for Chapter history information.

**Valentines Dance - This** year's dance to be held at The Inn on Broadway. Confirmed for Friday 2/10/2012. Corporate Sponsorship is \$350.00

**Next Meeting:** January 6<sup>th</sup> at noon Location: TBD  
The meeting was adjourned



## WELCOME TO OUR NEW MEMBERS

Nathan Landis of Day Automation  
Cody Ray Stevens of Day Automation

## 2011-2012 Presidential Award of Excellence Summary

Chapter #	Chapter Name	Chapter Members	Member Promotion	Student Activities	Research Promotion	Chapter Technology Transfer	History	Chapter Operations	Chapter PAOE Totals
11	Rochester	233	210	175	705	50	110	50	1300

# Society News— O & M Mini-Conference



For Release:  
Dec. 5, 2011

Contact: Amanda Dean  
Public Relations  
678-539-1216  
[adean@ashrae.org](mailto:adean@ashrae.org)

## O&M Mini-Conference Featured in ASHRAE 2012 Winter Conference Tech Program

ATLANTA—With low and zero energy buildings becoming more prevalent, there are many issues that arise with installation, startup, commissioning and operations and maintenance. To help ensure that the design intent of these more complicated systems is understood, an O&M “mini-conference” is being offered as part of ASHRAE’s 2012 Winter Conference, Jan. 21-25.

The mini-conference takes place Jan. 22-23 and is held in conjunction with the Technical Program of the ASHRAE Winter Conference, Palmer House Hilton, Chicago, Ill. The mini-conference kicks off with a debate on building operations and several sessions addressing current practices and tools.

“The mini-conference offers an opportunity to have an in-depth conversation for interested professionals in an abbreviated period of time,” Sarah Maston, Technical Program track chair of Operations & Maintenance, said.

The mini-conference addresses lessons learned, improvement of process and team communications and effort to improve the installation, startup, O&M of HVAC systems.

In particular, the importance of test procedures for HVAC systems for is addressed on Monday, Jan. 23, in “Air-Handling System Leakage: Benefits and Costs of Field Tests.” Such procedures are necessary because as much as one third of a system’s airflow can leach through the air distribution system, which can lead to loss of comfort and heating or cooling capacity; increase air conditioning and heating bills; and contribute to indoor air quality problems. The session highlights the benefits and costs of performing system leakage tests from the perspective of a testing, adjusting and balancing contractor, an association of sheet metal contractors and researchers, as well as an upcoming standard from ASHRAE and the Sheet Metal and Air Conditioning Contractors’ National Association (SMACNA) pertaining to testing procedures and requirements for total HVAC system air leakage in commercial buildings. The session is held 8 a.m.-9:30 p.m. at the Palmer House Hilton.

Additional sessions include:

- “What is the Right Degree of Automation in Building Operations: A Debate and Discussion”
- “Has Your TRAINing Left the Station?”
- “Fault Detection and Energy Audits”
- “Energy Savings and Performance Improvements through O&M”
- “Maximizing the Benefits of Commissioning: Incorporating Design Reviews and the Building Envelope into the Commissioning Scope”
- “Vibration Induced Noise and Mechanical Equipment Vibration Isolation, Balance and Predictive Maintenance”
- “YEA for Air Cleaning!”
- “Approaching Net-Zero and Maintaining Your Course: O&M Tools to Maintain Building Performance”
- “The New Age of Water Treatment for Mixed Metal Systems and High Efficiency Aluminum Boilers” – a free session to be held at the AHR Expo, McCormick Place

Additionally, the Chicago Virtual Conference is included with a paid Conference registration—comp and single day registration excluded—and includes on-demand access to all speakers’ audio presentations synced to their presentations. Attendees and speakers can post comments on the presentations for a two-week period following the completion of the Conference. Those not attending the Chicago Winter Conference in person may register for the Virtual Conference only. Register at [www.ashrae.org/chicagovirtual](http://www.ashrae.org/chicagovirtual).

For more information on the ASHRAE Conference, Jan. 21-25, or the Tech Program visit [www.ashrae.org/chicago](http://www.ashrae.org/chicago).

ASHRAE, founded in 1894, is an international organization of some 50,000 persons. ASHRAE fulfills its mission of advancing heating, ventilation, air conditioning and refrigeration to serve humanity and promote a sustainable world through research, standards writing, publishing and continuing education.



# Society News— Energy Efficiency Guide

For Release:  
Dec. 14, 2011

Contact: Jodi Scott  
Public Relations  
678-539-1140  
[jscott@ashrae.org](mailto:jscott@ashrae.org)

## New Book Offers Guidance on Implementing Energy Savings Plan



ATLANTA – Guidance on increasing energy efficiency in existing buildings through measuring and tracking efficiency and implementing an efficiency plan is featured in a new book from leading built environment organizations.

“Energy Efficiency Guide for Existing Commercial Buildings: Technical Implementation” provides clear and easily understood technical guidance for energy upgrades, retrofits and renovations by which building engineers and managers can achieve at least a 30 percent improvement in energy performance relative to a range of benchmark energy utilization indexes. It features practical means and methods for planning, executing and monitoring an effective program, based on widely available techniques and technologies.

“Energy efficiency improvement in buildings is one of the greatest means to increase resource efficiency, improve environmental stewardship and save operating funds,” George Jackins, who chaired the committee overseeing the book, said. “More importantly, energy efficient improvement should happen because it makes good business sense. Good planning and on-going commitment is essential to maximizing investments in energy efficiency.”

Improving energy in an existing building is an iterative process, but first you have to know where you are starting from, according to Jackins. The book recommends some tips on how to begin the energy savings process:

1. Calculate energy use and cost
2. Set energy performance goals
3. Measure and analyze current energy use
4. Select and implement energy efficiency measures
5. Measure and report improvements
6. Continue to track performance and reassess goals

“Energy Efficiency Guide for Existing Commercial Buildings: Technical Implementation” is the second energy efficient guide for existing commercial buildings developed by the same group developing at the Advanced Energy Design Guide series for new buildings – ASHRAE, the American Institute of Architects, the Illuminating Engineering Society of North America and the U.S. Green Building Council and supported by the U.S. Department of Energy. In addition, the Building Owners and Managers Association and the U.S. General Services Administration were involved in its development. The first, “Energy Efficiency Guide for Existing Commercial Buildings: The Business Case for Building Owners and Managers,” provides the rationale for making economic decisions related to improving and sustaining energy efficiency in existing buildings.

The cost of “Energy Efficiency Guide for Existing Commercial Buildings – Technical Implementation” is \$75 (\$64, ASHRAE members). To order, contact ASHRAE Customer Contact Center at 1-800-527-4723 (United States and Canada) or 404-636-8400 (worldwide), fax 404-321-5478, or visit [www.ashrae.org/bookstore](http://www.ashrae.org/bookstore).

ASHRAE, founded in 1894, is an international organization of some 50,000 persons. ASHRAE fulfills its mission of advancing heating, ventilating, air conditioning and refrigerating to serve humanity and promote a sustainable world through research, standards writing, publishing and continuing education.

*Welcome to ASHRAE's Government Affairs Update. Along with the Government Affairs webpage, these periodic e-mail updates feature information on government affairs related activities of interest to ASHRAE members and others interested in the built environment. Archives of previous updates are available from the government affairs webpage (<http://www.ashrae.org/advocacy>).*

*Please pass this information on to interested colleagues who also may subscribe from the ASHRAE Government Affairs webpage.*

*If you have any recommendations regarding content, or have questions about or would like to participate in Washington Office activities, please contact ASHRAE Government Affairs staff at (202) 833-1830 or [washdc@ashrae.org](mailto:washdc@ashrae.org).*

## ASHRAE Government Affairs Update, 12-16-2011

[Congress Nears a Down Payment on New CBECS](#)

[Congress Passes National Defense Bill – Requires New Report on Standards 189.1-2011 and 90.1-2010 for Military Construction and Repair](#)

[DOE Releases New Version of Energy Modeling Software](#)

[Workshop Held on DOE's Proposed Commercial Building Energy Asset Rating Program](#)



### Congress Nears a Down Payment on New CBECS



Unless plans unravel, today (or shortly thereafter), Congress will pass a funding deal that combines several bills into a single package, and averts a partial government shutdown. Tucked away in this massive, near \$1 trillion bill, which President Barack Obama is expected to sign into law, is a down payment to conduct the next edition of the Commercial Buildings Energy Consumption Survey (CBECS).

Conducted about once every four years, CBECS is a national sample survey that collects information on the stock of U.S. commercial buildings, their energy-related building characteristics, and their energy consumption and expenditures. The Survey is administered by the U.S. Energy Information Administration, and is a prime example of one of those little known programs that underpin several public and private sector buildings programs and activities. For instance, CBECS data help form the basis for understanding the patterns of energy use, are used by ASHRAE's standards, and are utilized by the ENERGY STAR Buildings program, ASHRAE's Building Energy Quotient (Building eQ) building energy labeling program, Leadership in Energy and Environmental Design (LEED) for Existing Buildings, Green Globes®, and many others.

ASHRAE and the building industry have been relying on CBECS data that is nearly a decade old (the latest data is from 2003), and without assistance from Congress, a new CBECS would not occur, and because there is no other survey like it, the needed information on building energy use could not otherwise be easily obtained. As a result, ASHRAE has been leading a coalition of building industry stakeholders to work with key Members of Congress to help ensure that a new CBECS is conducted.

For additional information, please contact ASHRAE's Washington Office at [WashDC@ashrae.org](mailto:WashDC@ashrae.org).

## **Congress Passes National Defense Bill – Requires New Report on Standards 189.1-2011 and 90.1-2010 for Military Construction and Repair**

This week Congress passed the National Defense Authorization Act for Fiscal Year 2012 (NDAA). President Barack Obama is expected to sign the bill into law. The NDAA requires the U.S. Department of Defense (DoD) to issue a new report on the energy efficiency and sustainability standards used by DoD for military construction and repair. This report will include a cost-benefit analysis, return on investment, and long-term payback for ASHRAE Standard 189.1-2011 Standard for the Design of High-Performance Green Buildings Except Low-Rise Residential Buildings, ASHRAE Standard 90.1-2010 Energy Standard for Buildings Except Low-Rise Residential Buildings, and Leadership in Energy and Environmental Design (LEED) silver, gold, and platinum certification, as well as LEED volume certification. Other, non-specified, American National Standards Institute-accredited standards may also be examined in the report as well.

ASHRAE assisted the House and Senate Armed Services Committees in drafting the ASHRAE building standards section of this bill, and many of our recommendations were incorporated into the final bill. ASHRAE has already reached out to DoD staff to begin understanding how this report may be assembled, and will be involved with the report, to the extent possible.

## **DOE Releases New Version of Energy Modeling Software**



[http://apps1.eere.energy.gov/news/news\\_detail.cfm/news\\_id=17948](http://apps1.eere.energy.gov/news/news_detail.cfm/news_id=17948)

The U.S. Department of Energy (DOE) recently released the latest version of its building energy modeling software EnergyPlus, which calculates the energy required to heat, cool, ventilate, and light a building. EnergyPlus is used by architects and engineers to design more efficient buildings, by researchers to investigate new building and system designs, and by policymakers to develop energy codes and standards. Advanced physics calculations within EnergyPlus allow it to model a wide range of residential and commercial buildings and HVAC system types, including passive building designs and low-energy systems.

EnergyPlus v7.0 features many enhancements and has 25 to 40 percent faster execution speeds on a wide variety of models. EnergyPlus is a part of DOE's strategy of Building Energy Modeling (BEM), a key technology that helps achieve DOE's mission of significantly reducing energy consumption in new buildings and retrofits. In addition to helping architects and engineers find low-energy building designs, BEM is used in the development of building energy efficiency codes and standards, in the creation of energy design guides, in the certification of building energy performance, and other applications. EnergyPlus v7.0 is available free of charge for Windows, Mac OS, and Linux. Source code licenses are also available. For additional information, please see the DOE press release.

## **Workshop Held on DOE's Proposed Commercial Building Energy Asset Rating Program**

Last week the U.S. Department of Energy (DOE) held a workshop on their proposed Commercial Building Energy Asset Rating (AR) Program. ASHRAE attended this two-day meeting, and previously submitted comments to an earlier request for comments from DOE. ASHRAE's comments can be viewed at [/advocacy/page/1348](#). Click on the link titled "ASHRAE Comments to DOE on DOE's Development of a Voluntary National Asset Rating Program for Commercial Buildings", under the Letters and Testimony section of the Webpage.

DOE expects to issue a request for information on the design of their pilot AR Program in late February/early March, and to begin the pilot in April, 2012.